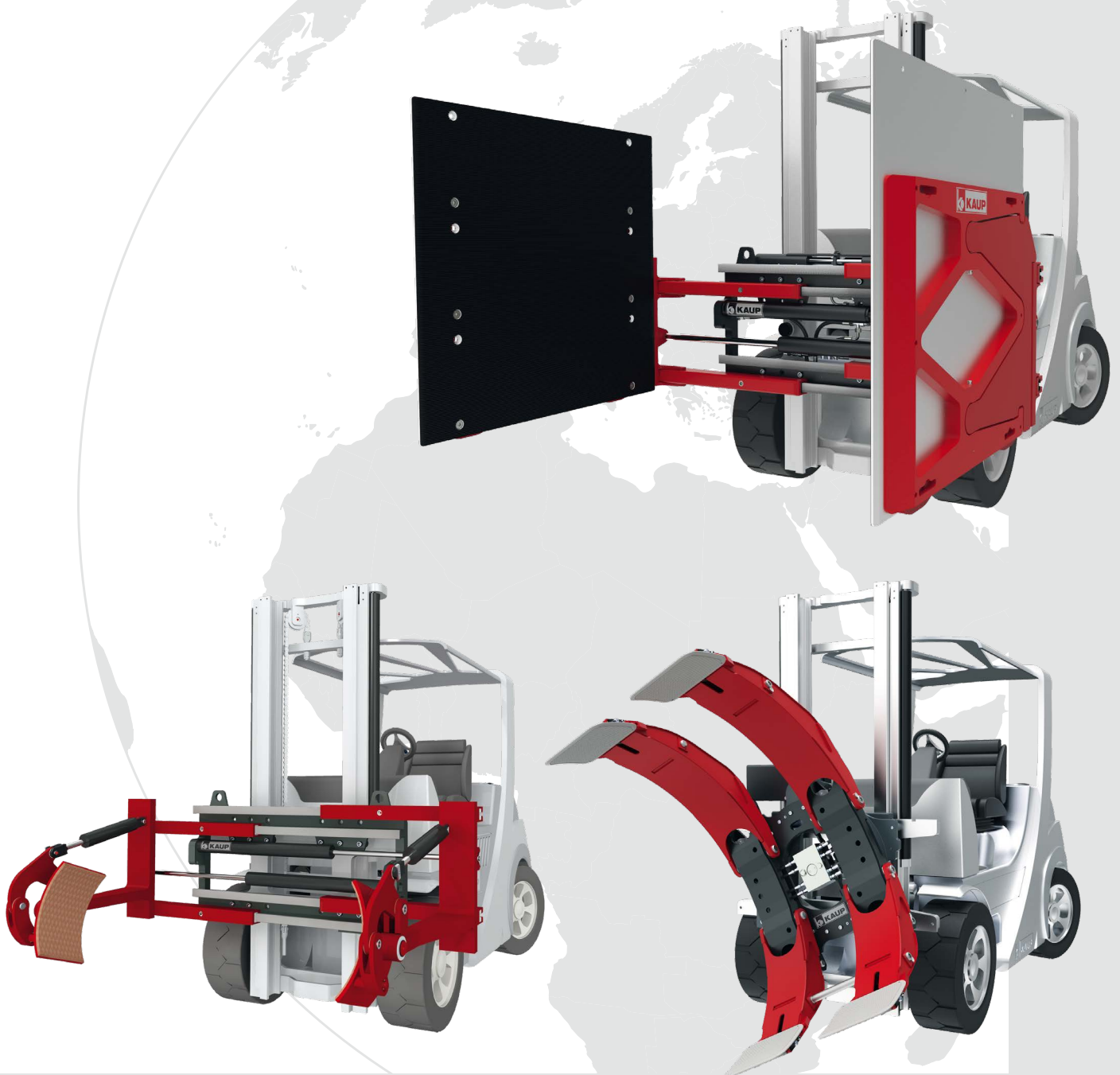




Helping hands for your Forklift truck

KAUP accessories

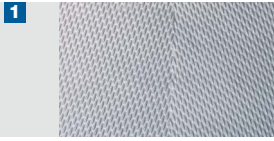
**Contact pad coatings for KAUP Roll Clamps,
for Appliance- and Carton Clamps and Drum Clamps**



HIGH-VISIBILITY FORKLIFT TRUCK ATTACHMENTS

for KAUP Roll Clamps, for Appliance- and Carton Clamps and Drum Clamps

The inner surface of the contact pads is very important on Roll Clamps as well as on Appliance- and Carton Clamps as it is in direct contact with the load to be handled. These KAUP Clamps can be fitted with different types of contact pad surfaces specifically suited to the application.



Cast contact pads

with fish bone pattern are standard. These can be applied universally and are suitable for most applications.



Bulb plate pads

are an alternative to cast contact pads when special shapes and sizes are to be manufactured individually. Suitable for a multitude of applications.



Metal spray surface

contact pads with a metal spray surface distinguish themselves by having a low build-up and excellent friction. This surface should only be chosen for loads with a very hard surface.



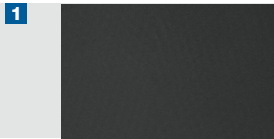
SIC surface

is also used for loads with a very hard top surface and characterizes excellent friction.



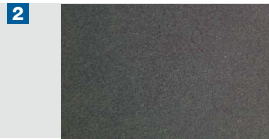
Polyurethane coating Poly-1 (light)

bonded in several layers in a costly and complex process, distinguishes itself through excellent friction. It is extremely durable, leaves no marks or streaks and can be used universally. (Standard for contact pads with coating).



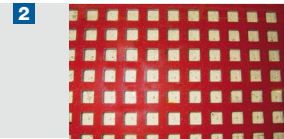
Polyurethane coating Poly-2 (dark)

bonded in several layers in a costly and complex process, distinguishes itself through excellent friction. It is extremely durable, leaves no marks or streaks and can be used universally. (Alternative to Poly-1 on request).



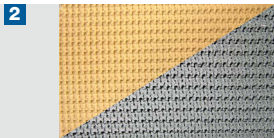
Rubber lining

vulcanised onto the contact pads, is an alternative to Polyurethane. It is characterized through excellent friction and moulds to the surface of the load. This lining can be used for most applications.



Secutex lining

is made of Polyurethane cast around a metal grid. It is screwed onto the contact pads and can be exchanged easily if necessary. It distinguishes itself through excellent friction and durability.



Gripping nap strap coating

the yellow coating is very soft, leaves no marks on the load and distinguishes itself through excellent friction. The black coating has low wear and tear qualities.



Grooved profile rubber (RPG)

The vulcanized grooved profile rubber on the aluminum pressure plates is characterized by high abrasion resistance. Due to the very good adhesion and adaptation to the load surface a lower clamping pressure is required. Grooved profile rubber is only available on screw-on aluminum pressure plates.



Remagrip coating

this diamond shaped soft rubber coating is used as standard on drum clamps. It is to a certain degree acid resistant.



1 for use on KAUP Roll Clamps T458 - T498.

2 for use on KAUP Appliance and Large Surface Clamps T413G - T414-2.

3 for use on KAUP-Drum Clamps T405 - T495.

KAUP attachments correspond to the requirements of the valid EC regulations regarding quality, safety and technical documentation. All technical data are subject to alteration.

KAUP is certified acc. to DIN EN ISO 9001



Helping hands for your Forklift truck

KAUP GmbH & Co. KG

Braunstrasse 17 · D - 63741 Aschaffenburg

☎ +49 6021 865-0 · 📠 +49 6021 865-213

E-Mail: kaup@kaup.de · www.kaup.de